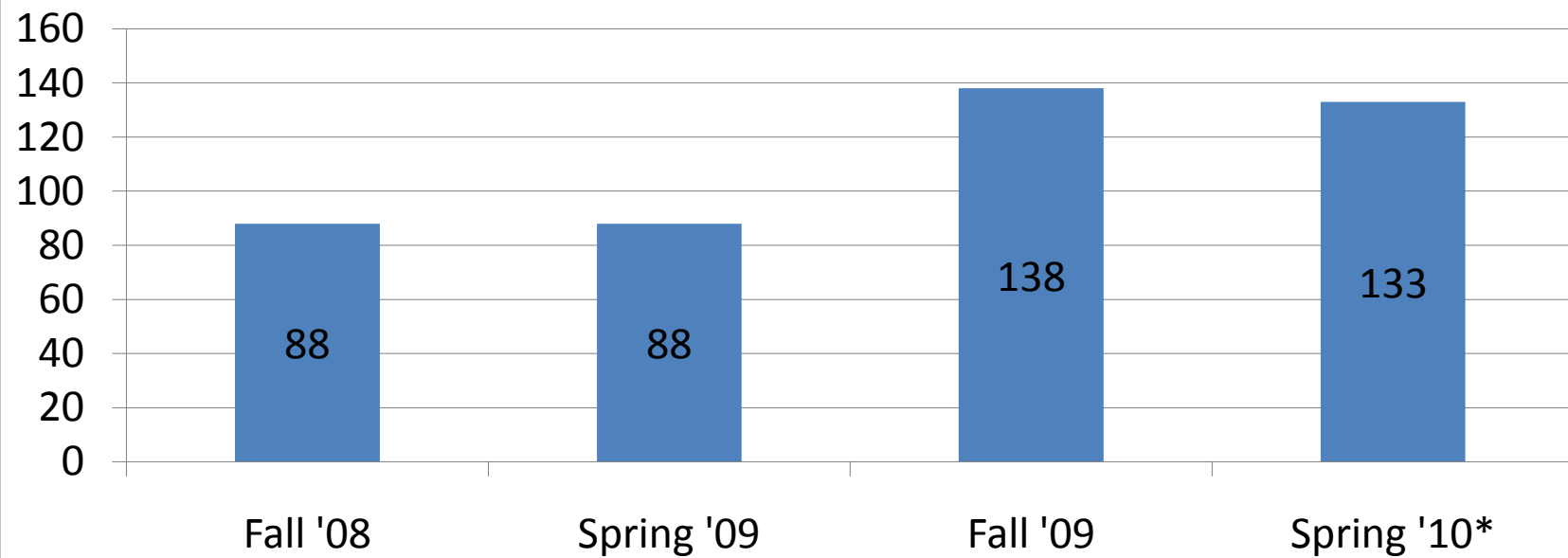


UTeach Student Population

- Enrollment and Demographics
- Fall 2009 UTeach Retreat, 12/8/09

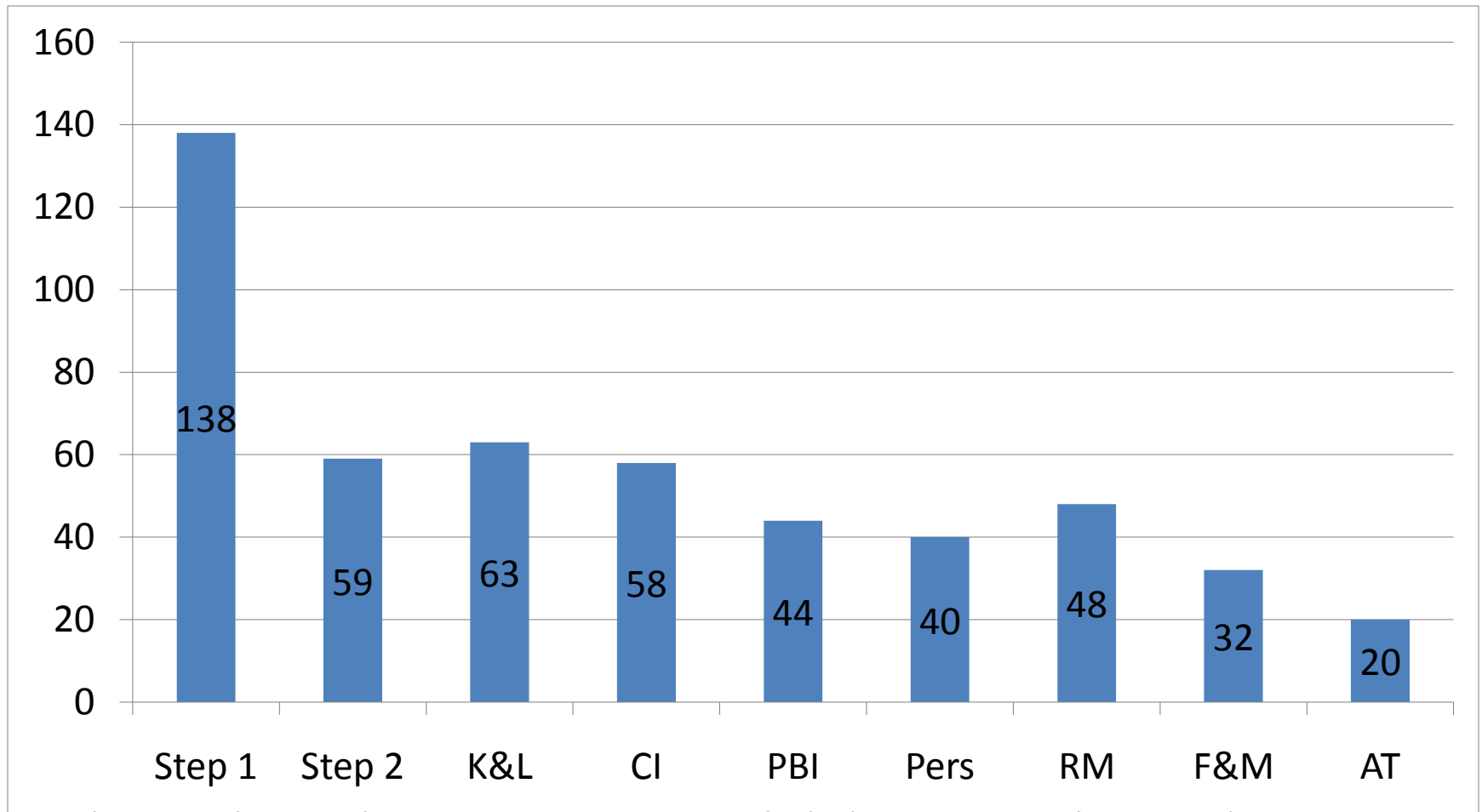
New Recruits to UTeach

Students Enrolled in Step 1 (including combo course)



* Spring 2010 data is as of 12/3/09, and will change with add/drop period.

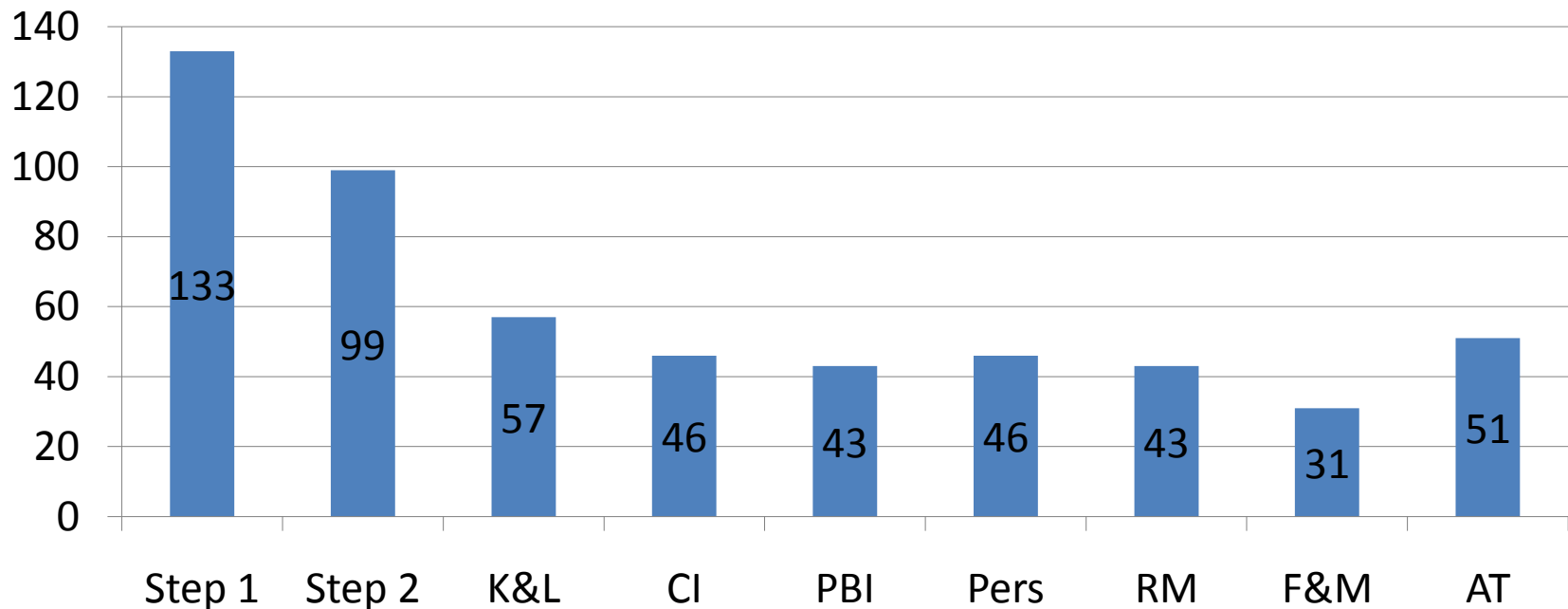
Fall 2009 Enrollment by Course



Students in the Combo Step ½ course are included in Step 1 and Step 2 above.

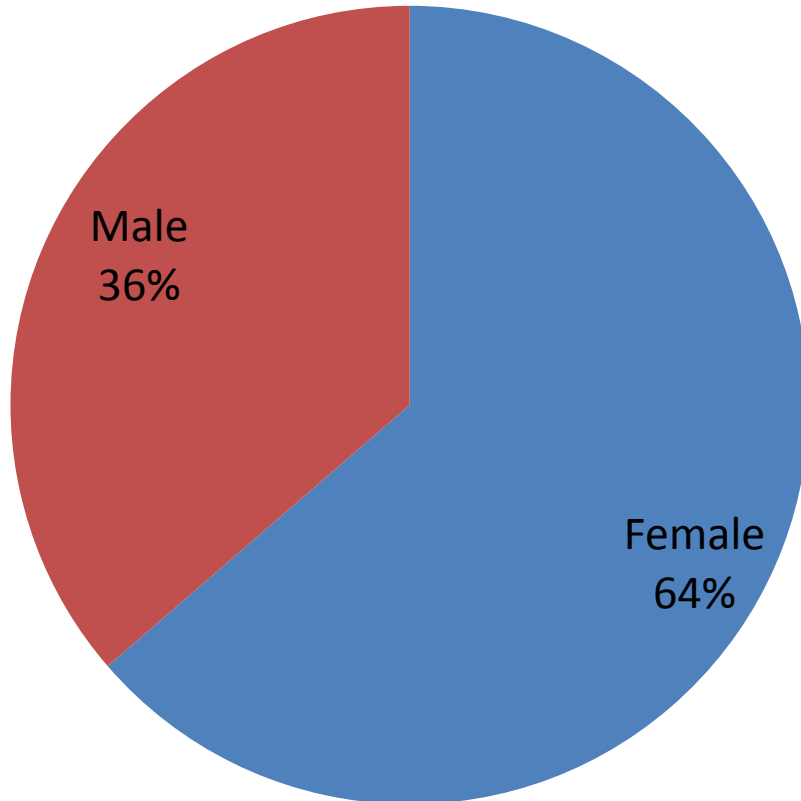
Looking Ahead: Students Enrolled in Spring 2010 Courses, as of 12/3/09

Estimated Course Enrollment for Spring 2010



Students in the Step ½ Combo are counted in both Step 1 and Step 2 above.

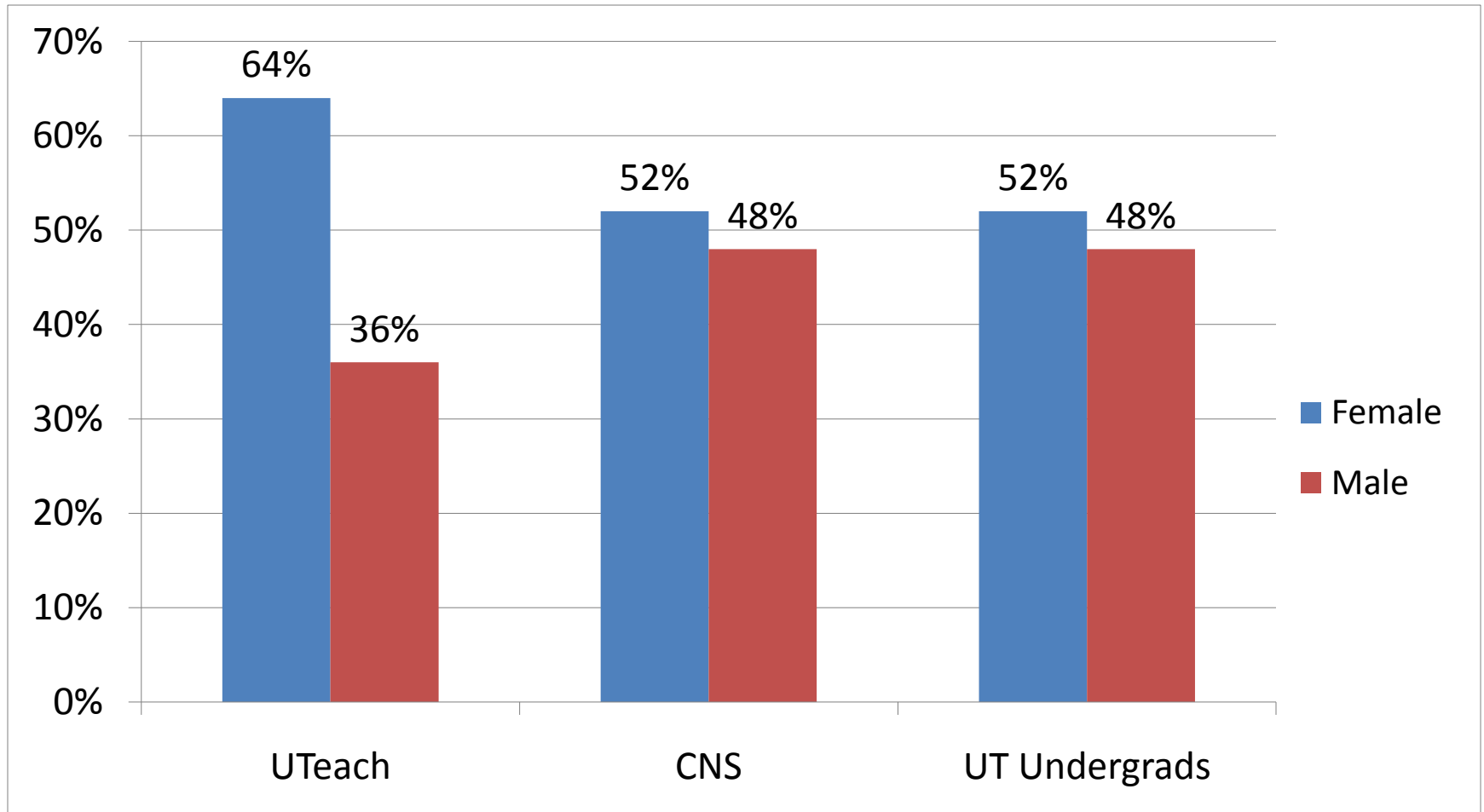
Gender of Students



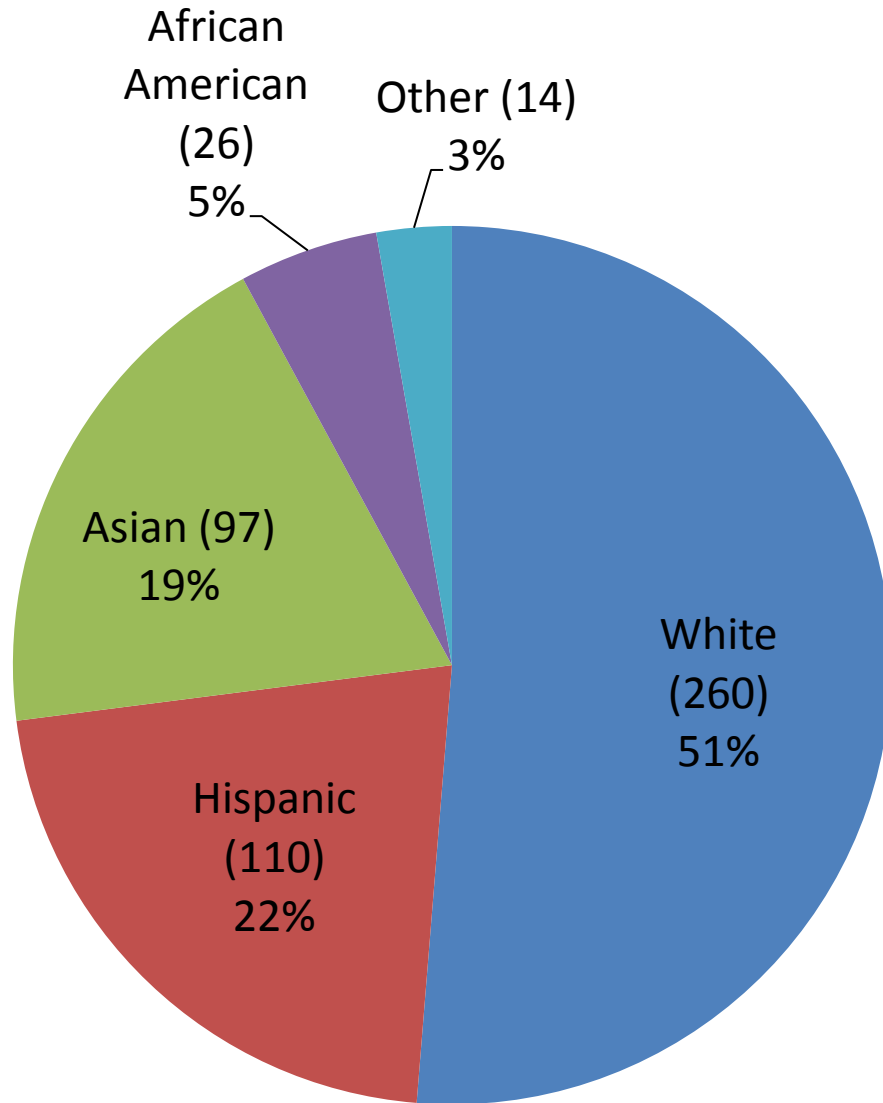
Total number of students in program: 509 (current students plus those who've taken a course in the last two long semesters)

Males: 185
Females: 324

Gender in Program Compared to College and University

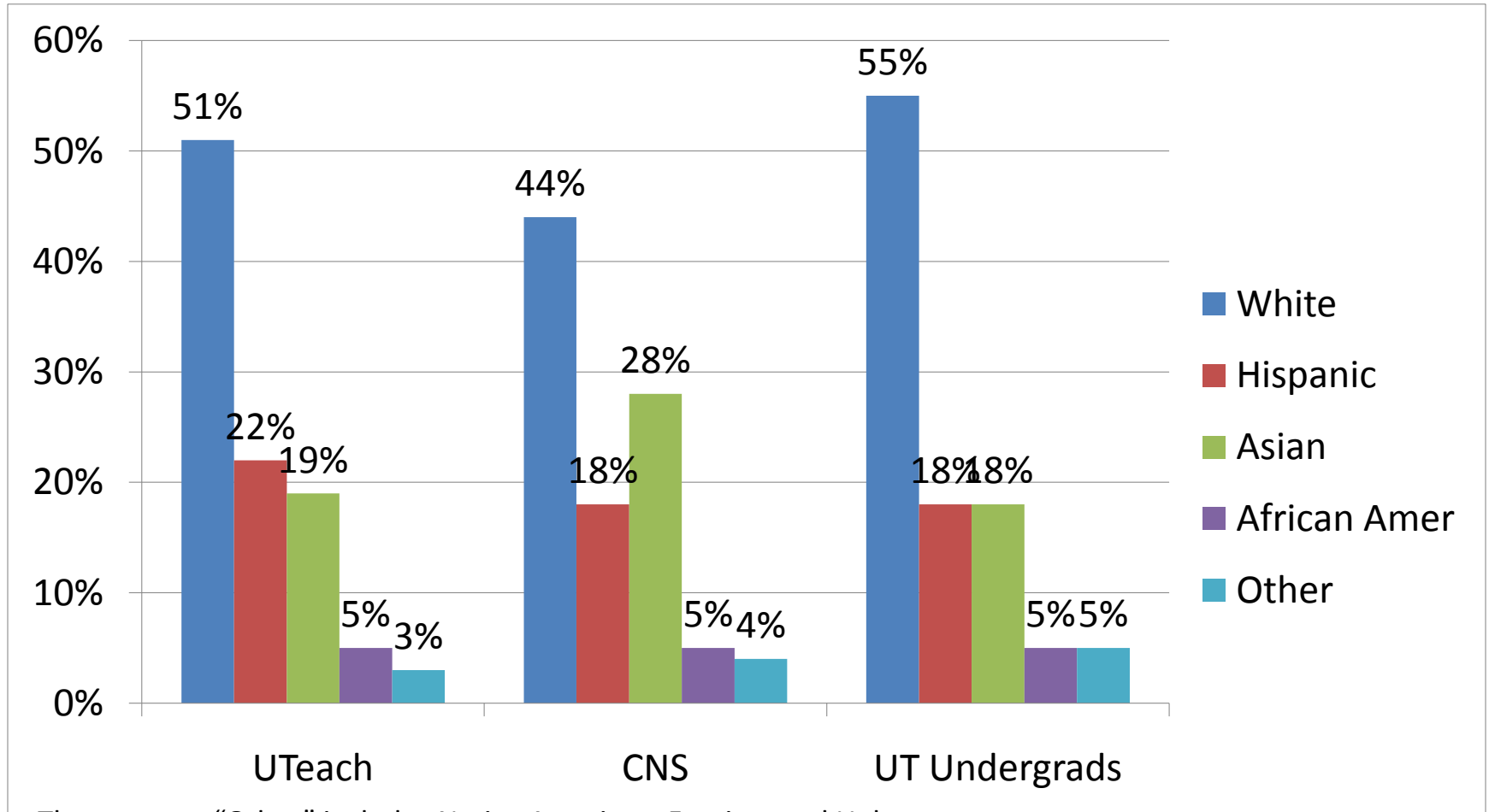


UTeach Demographics



The "Other" category includes 13 declared as "foreign", and 1 Native American student

Ethnicity in UTeach compared with the College and University

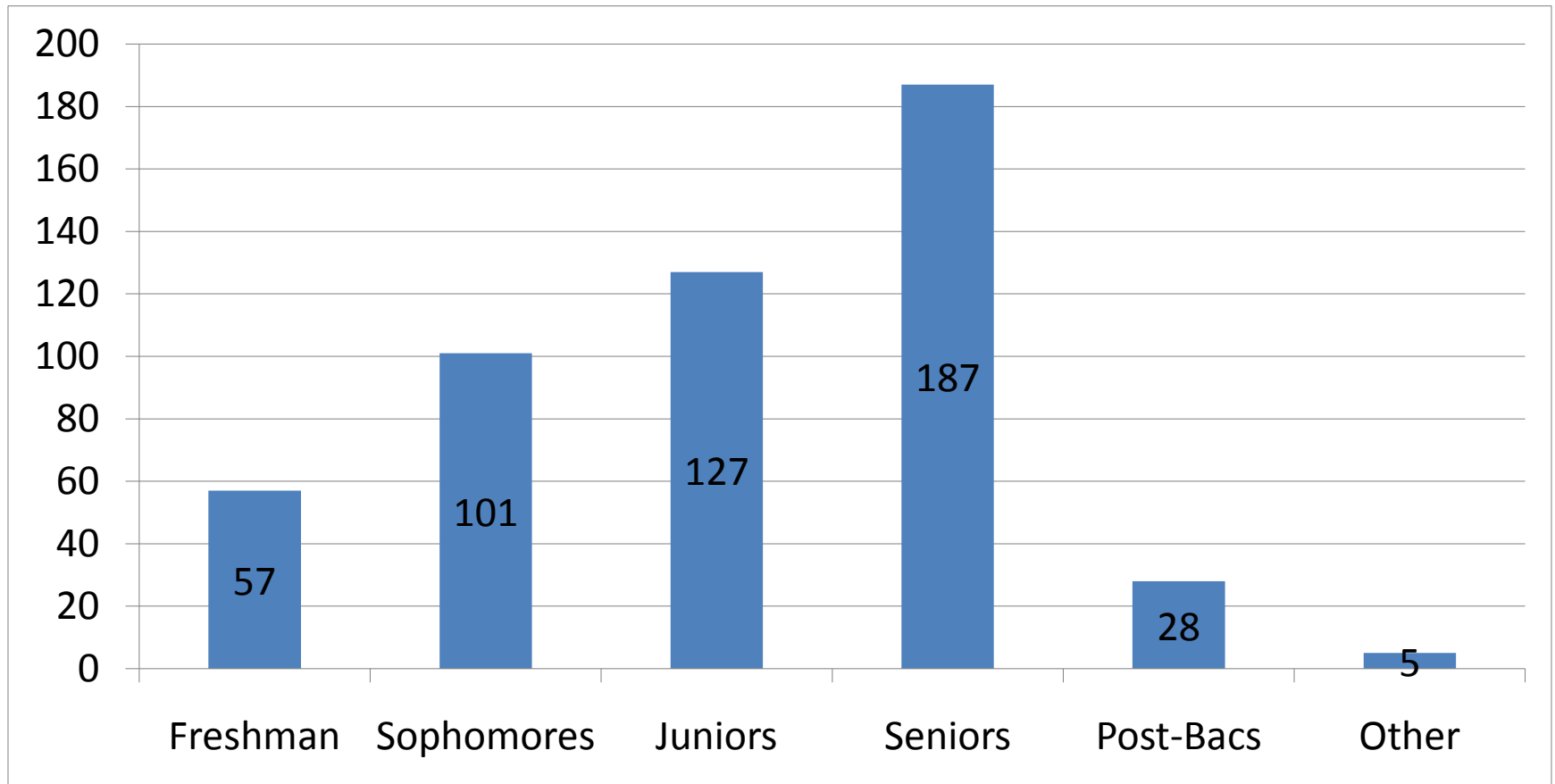


The category "Other" includes Native American, Foreign, and Unknown.

Percentages may not add to exactly 100% due to rounding.

* CNS and UT Undergrad data is from Fall 2008. UTeach's data is from Fall 2009.

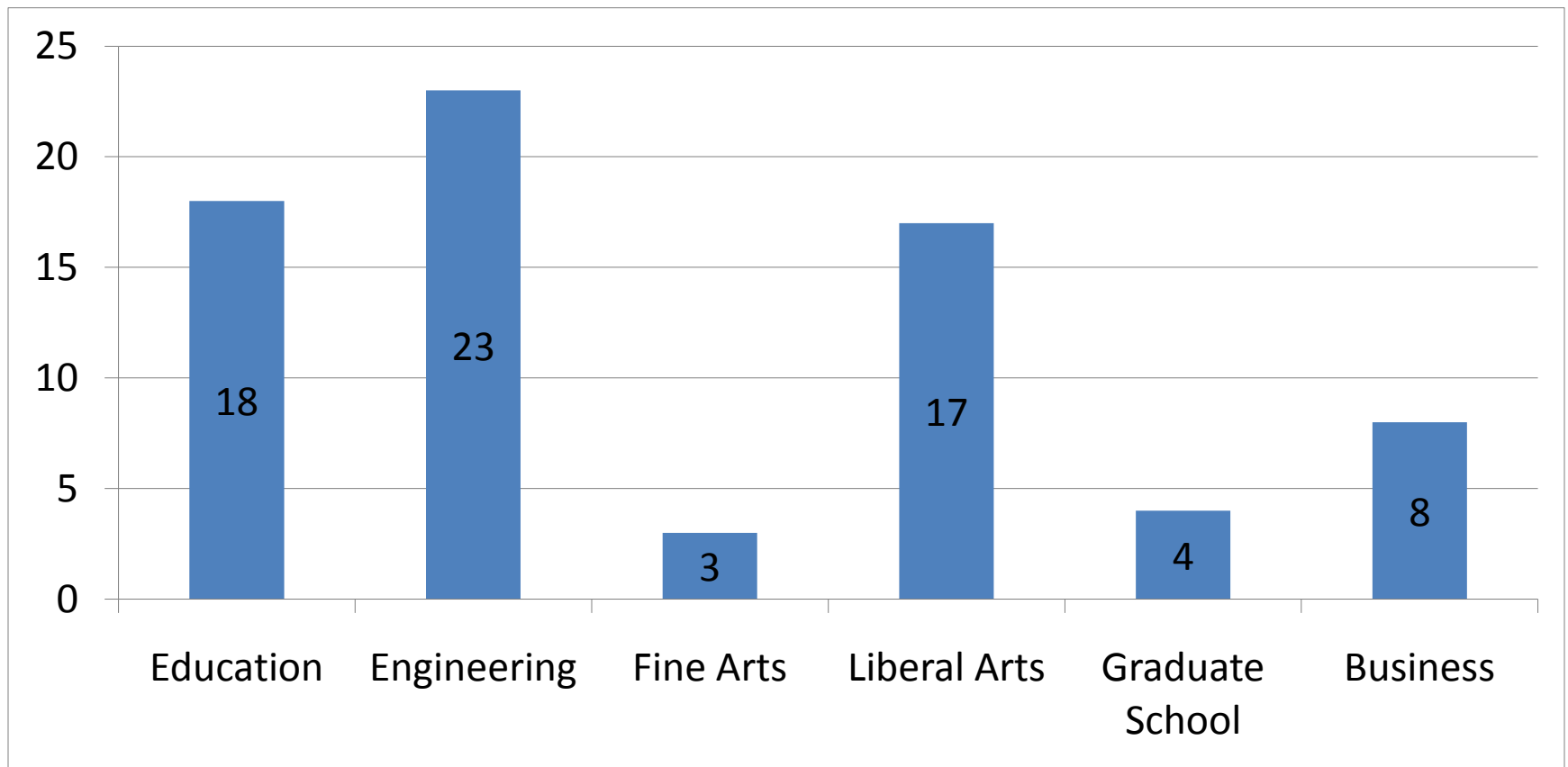
U Teach Students by Classification



The “other” category includes students in the Pharmacy program and a student in the law school.

Students in UTeach by College

The majority of UTeach students, 85% (427 of 505), are enrolled in the College of Natural Sciences. The remaining 78 students are from...



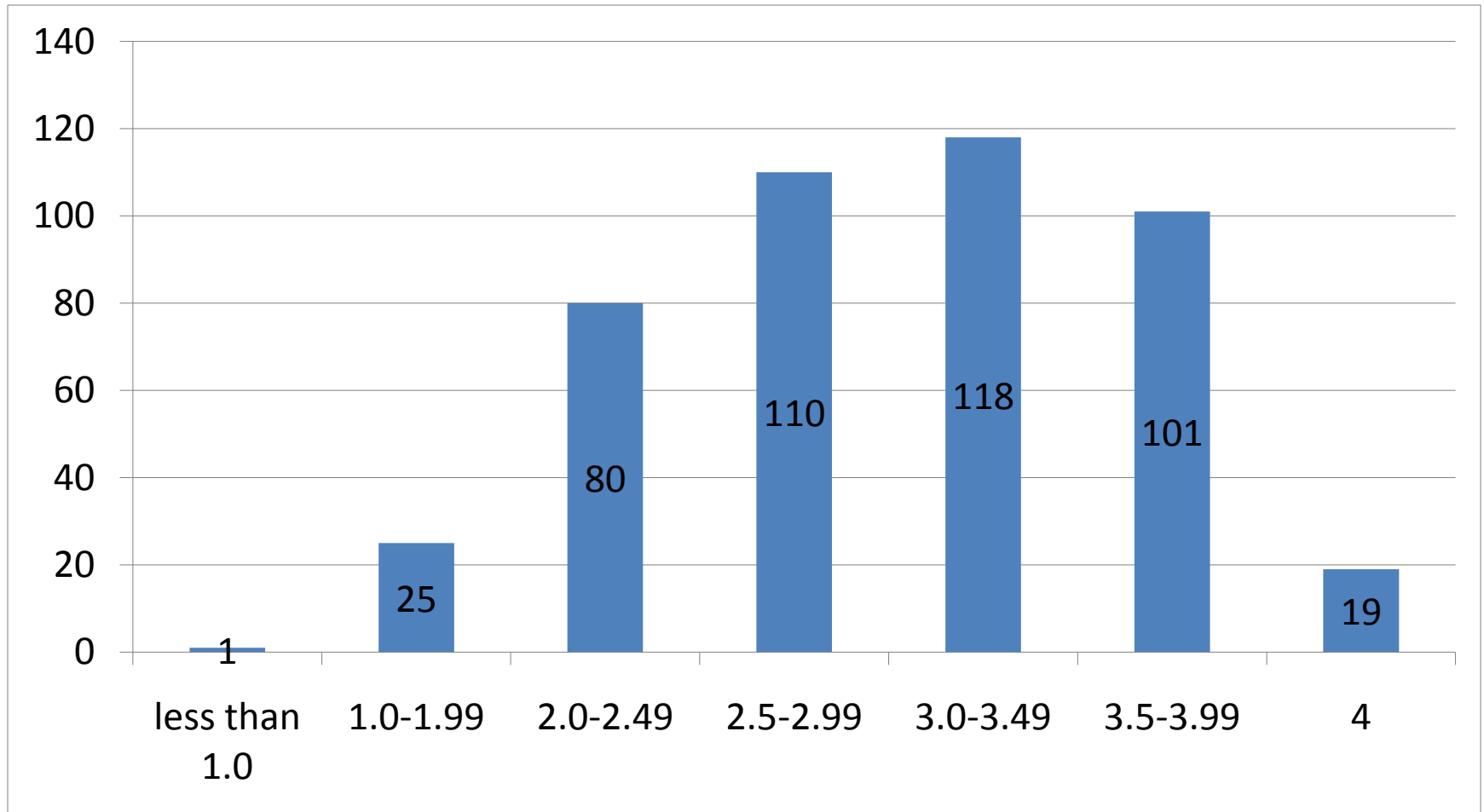
There is also 1 student from each of the following colleges: Communication, Pharmacy, Architecture, Law, and Nursing.

UTeach Student Classification by Major (CNS only, n=427)

	Number	Overall %
Mathematics (Teaching Option, 59% of math majors)	104	24.4%
Mathematics (Other, 41% of math majors)	71	16.6%
Biology (Teaching Option, 32% of bio majors)	37	8.7%
Biology (Other, 68% of bio majors)	79	18.5%
Chemistry (Teaching Option, 52% of chem majors)	16	3.7%
Chemistry (Other, 48% of chem majors)	15	3.5%
Physics (Teaching Option, 36% of physics majors)	8	1.9%
Physics (Other, 64% of physics majors)	13	3.0%
Human Ecology	24	5.6%
Biochemistry	6	1.4%
Astronomy	2	.5%
Computer Sciences	7	1.6%
Interdisciplinary Math/CS Senior Grades	2	.5%
Interdisciplinary Math/Science Middle Grades	3	.7%
Undeclared	12	2.8%
Degree-Holders	28	6.6%

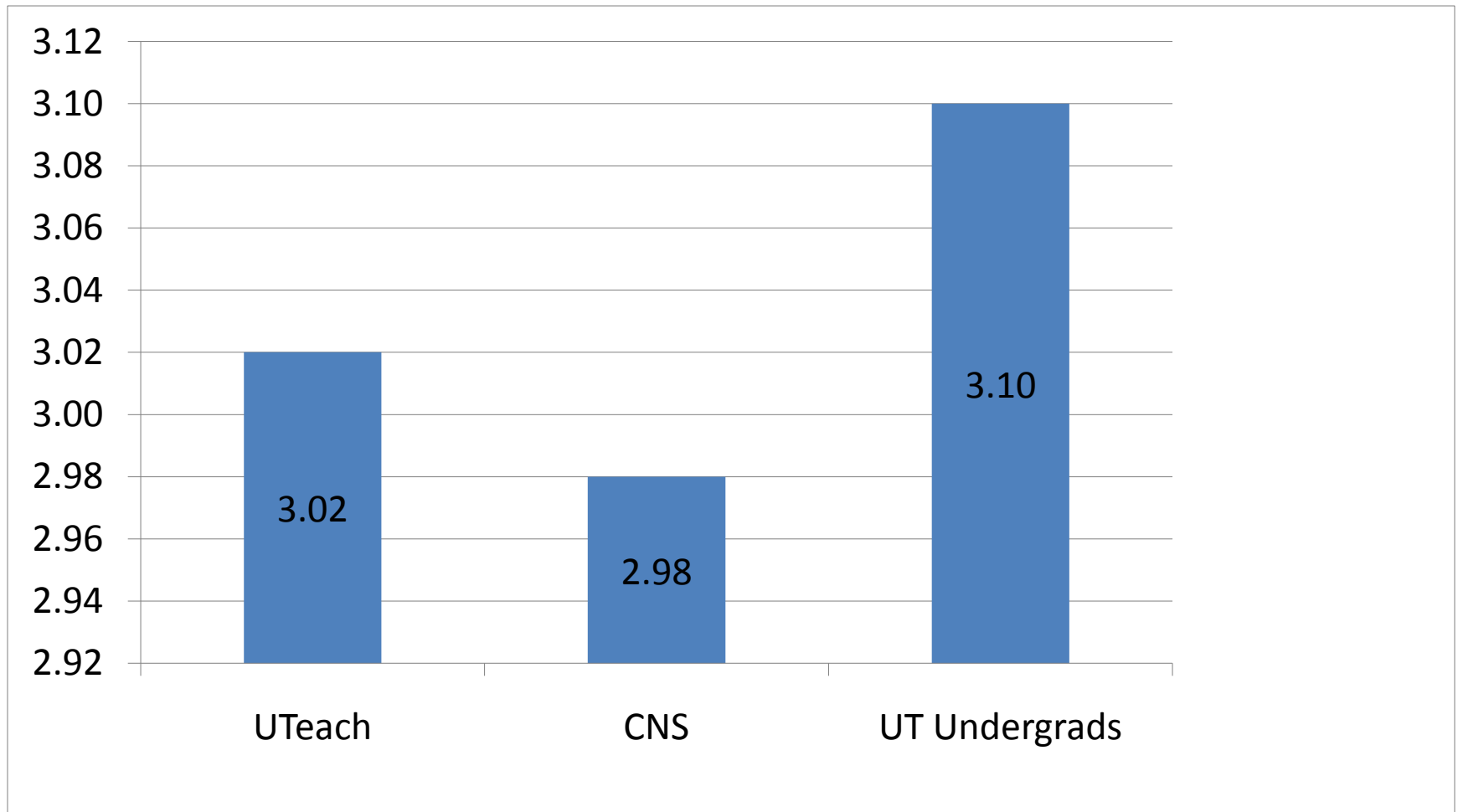
UTeach Student GPAs

We have GPA information for 454 students. Of those 454...



The average GPA for UTeach students is 3.02.

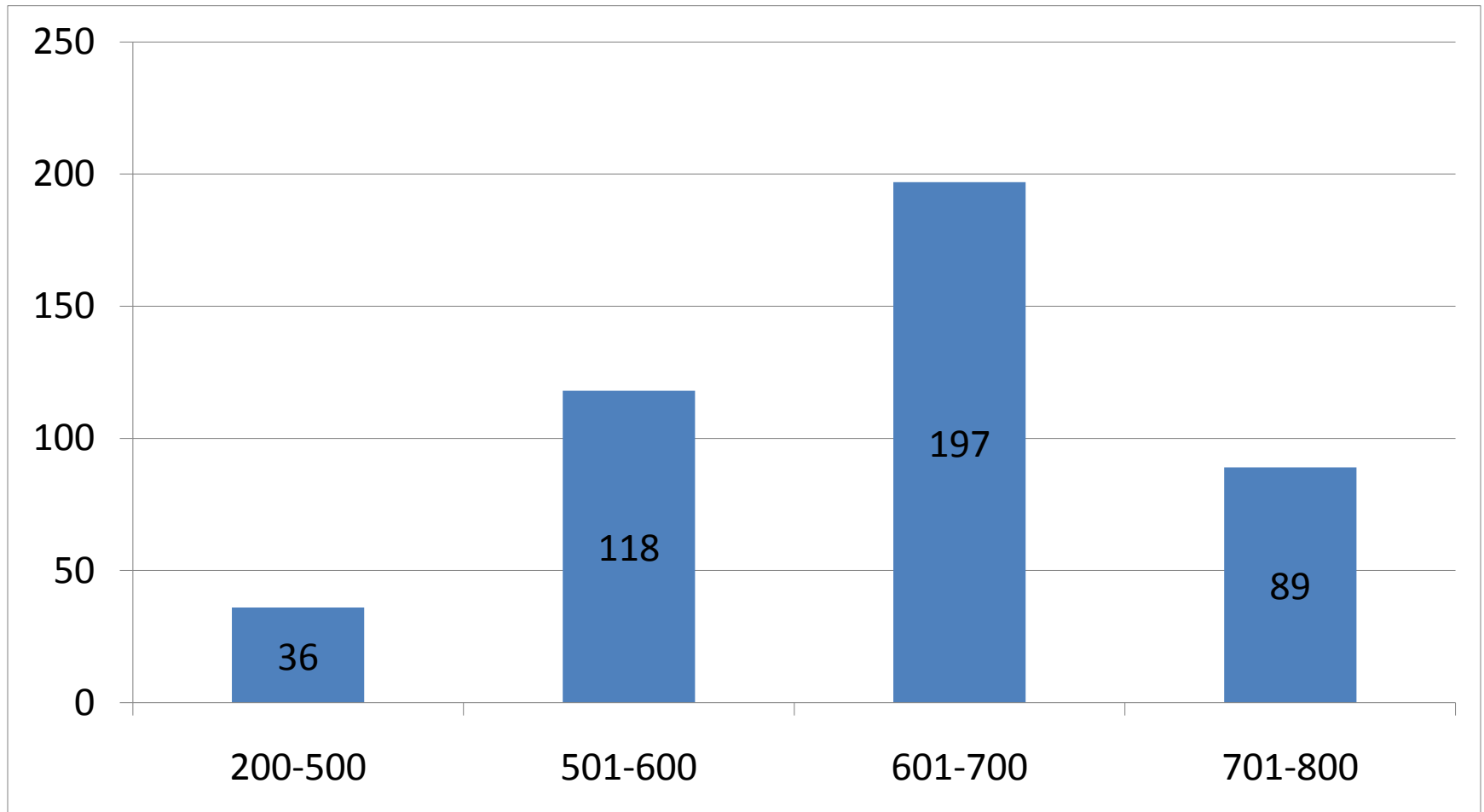
UTeach GPAs compared to the College and University



The CNS and UT data comes from the Fall 2008 Statistical Handbook. The UTeach data are from Fall 2009.

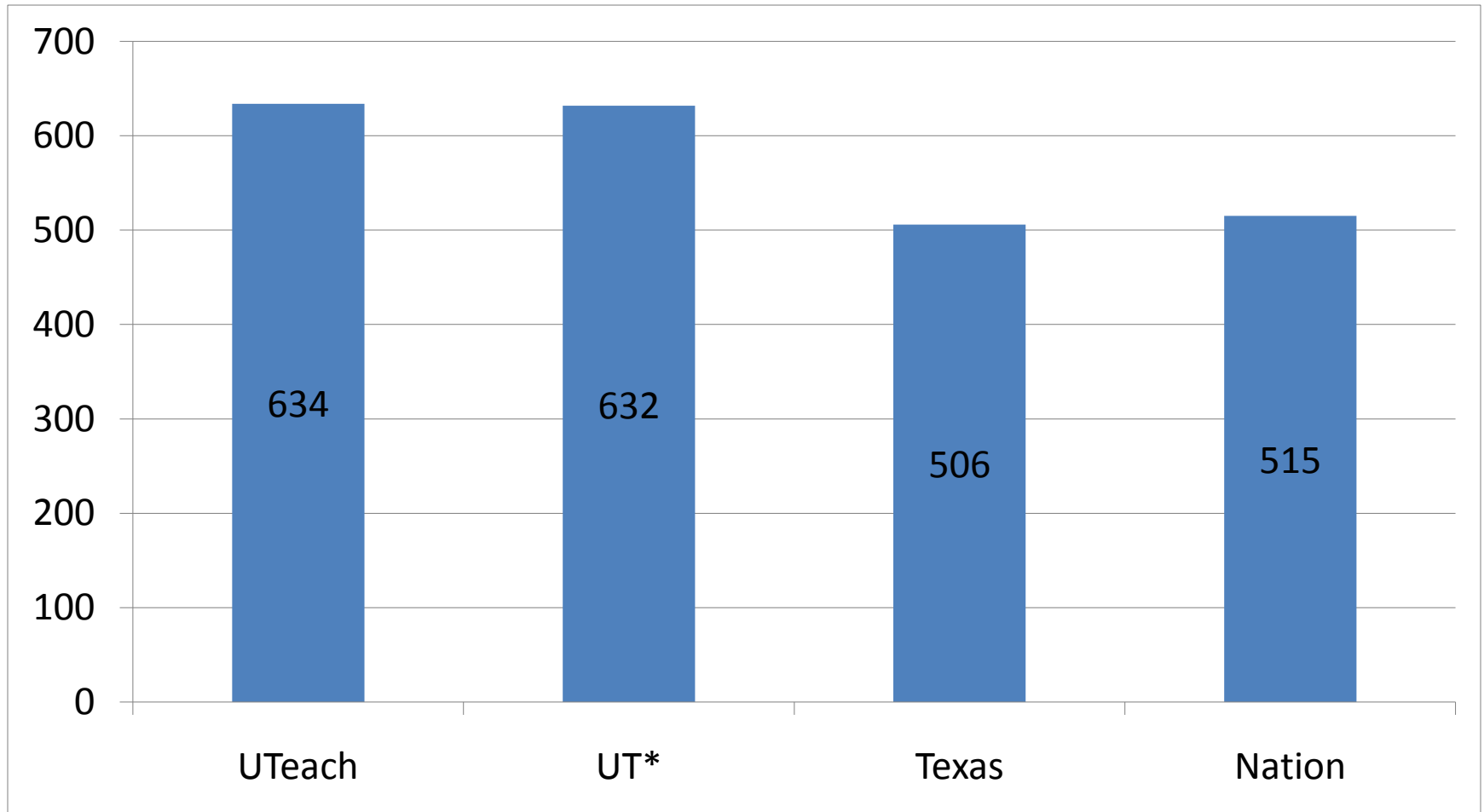
UTeach Student SAT Math Scores

These data were available for 440 UTeach students. Of those 440...



The average SAT Math score for UTeach students is 634.

Average SAT Math Scores- UTeach, University, State, and Nation

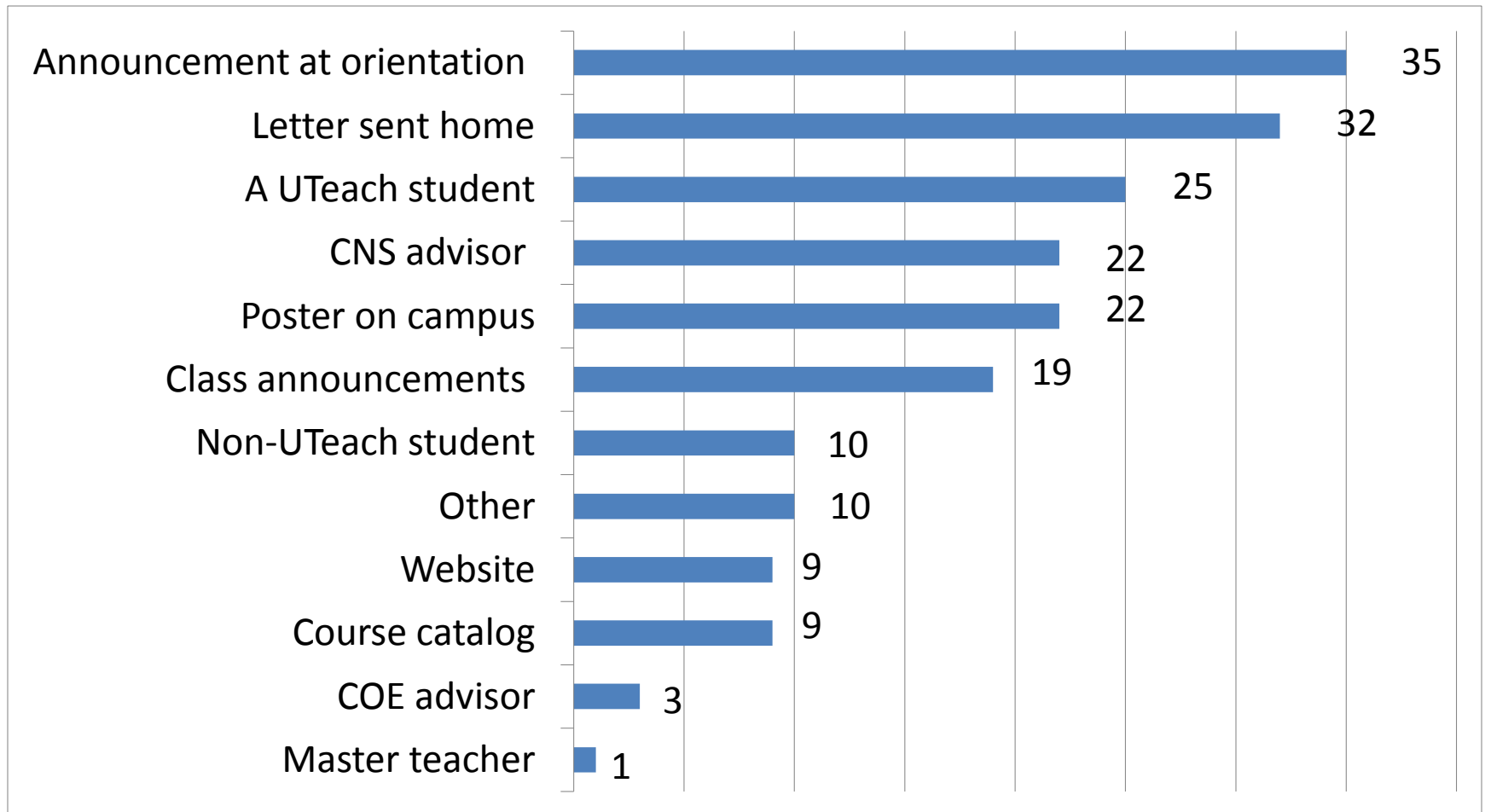


We have data for 440 UTeach students.

* UT data is from the Fall 2008 Statistical Handbook.

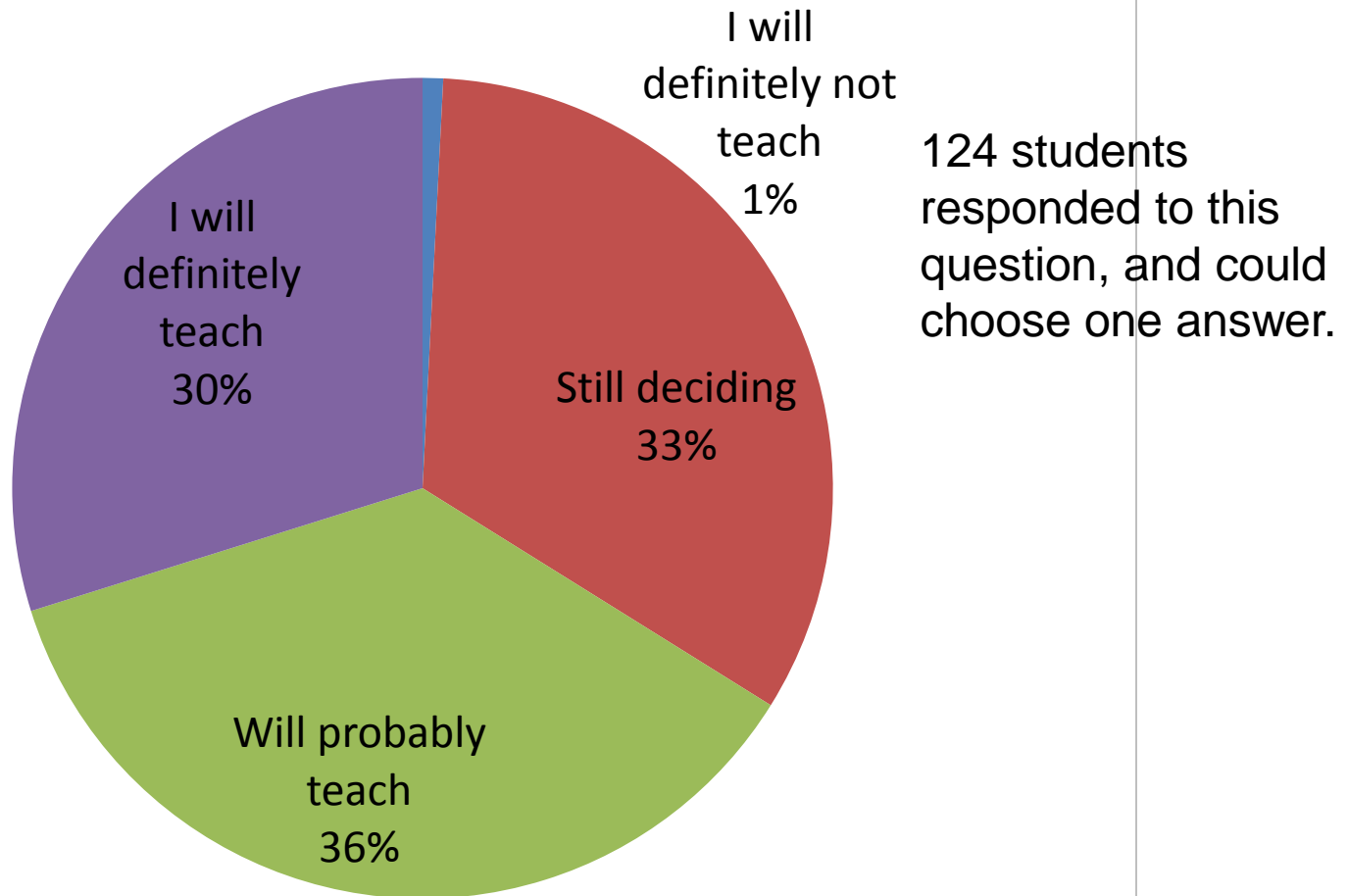
Q: How did you hear about UTeach?

(Entrant Survey, 124 responses)



124 students responded to this question, and were allowed to choose more than one option.

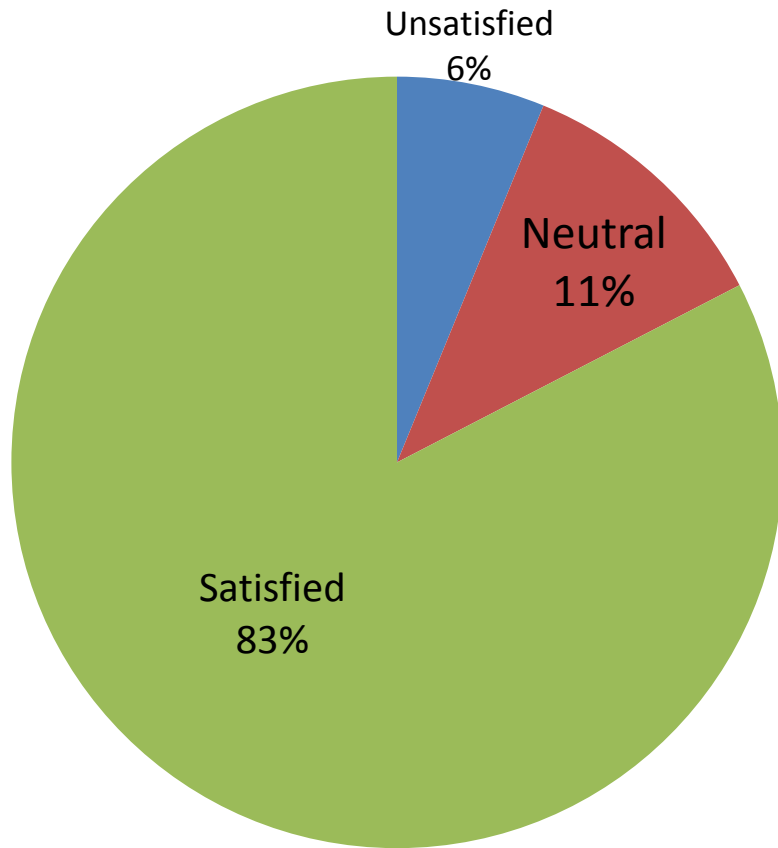
Q: Do you plan on teaching in a school in grades 4-12? (Entrant Survey)



Program Satisfaction

(from Mid-semester Survey)

Step 1 responses (n=98)



Step 2 and Beyond (n=236)

